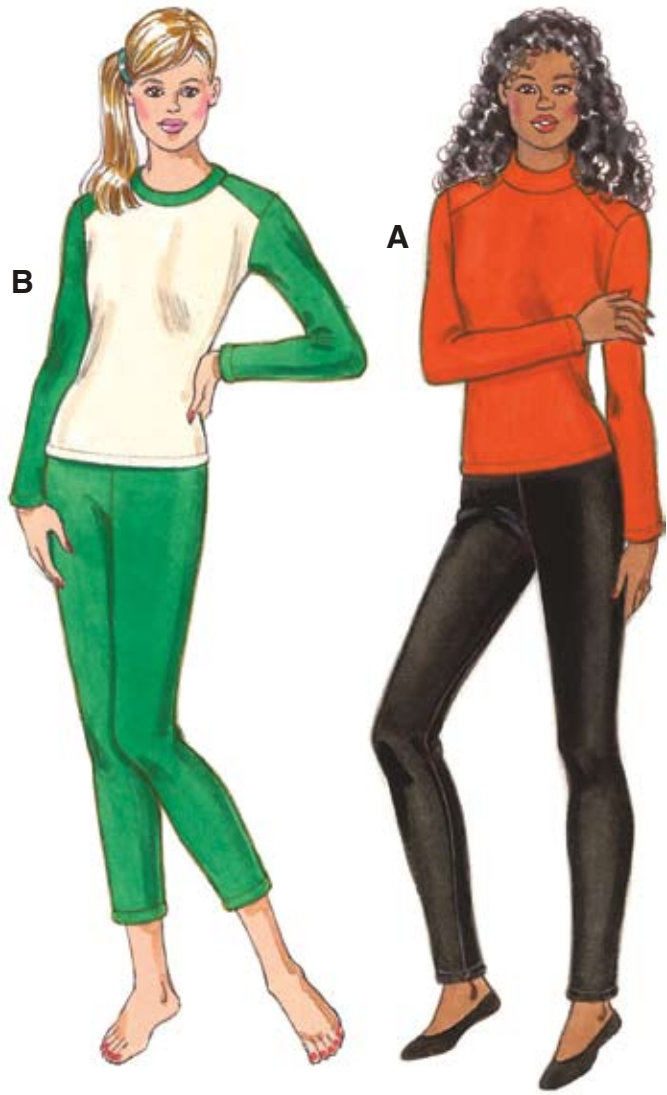
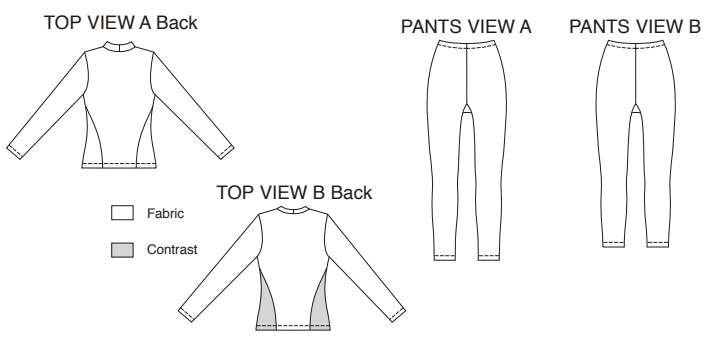




Misses' close-fitting tops and leggings. Tops have full-length sleeves, forward shoulder seams, and "wrap-around" side seams. View A has mock turtleneck. View B has neckband and contrast fabric front. Pants have no side seams, elastic waist, and crotch gusset. View A pants are ankle length, and View B are cropped.



KWIK·SEW®
3455 price

MISSES' TOPS & PANTS **DESIGNED FOR STRETCH KNITS ONLY WITH 50% STRETCH**
 Sizes: XS-S-M-L-XL Suggested Fabrics: Fleece with spandex Lycra®, activewear fabrics with spandex Lycra®, Polartec® PowerStretch®*

* Polartec® PowerStretch® trademark of Malden Mills.

Size	XS	S	M	L	XL	
Finished Length of Top at Center Back						
View A & B	21 (53)	21 3/4 (55)	22 1/2 (57)	23 1/4 (59)	24 (61)	" (cm)
Finished Inside Leg Seam						
View A	28" (71 cm) — All Sizes					
View B	23" (58 cm) — All Sizes					
Material Required: Fabric requirement allows for nap, one-way design or shading. Extra fabric may be needed to match design or for shrinkage.						
Fabric 60" (152 cm) Wide						
Top View A	1 1/4 (1.15)	1 3/8 (1.30)	1 3/8 (1.30)	1 1/2 (1.40)	1 1/2 (1.40)	yd (m)
Top View B Fabric	7/8 (0.80)	7/8 (0.80)	7/8 (0.80)	7/8 (0.80)	7/8 (0.80)	yd (m)
Contrast	3/4 (0.70)	3/4 (0.70)	3/4 (0.70)	3/4 (0.70)	7/8 (0.80)	yd (m)
Pants View A	1 1/4 (1.15)	1 1/4 (1.15)	1 1/4 (1.15)	1 1/4 (1.15)	1 3/8 (1.30)	yd (m)
Pants View B	1 1/8 (1.05)	1 1/8 (1.05)	1 1/8 (1.05)	1 1/8 (1.05)	1 1/8 (1.05)	yd (m)

Notions: Thread. PANTS: 1 yd (0.95 m) of 3/4" (2 cm) wide elastic.